

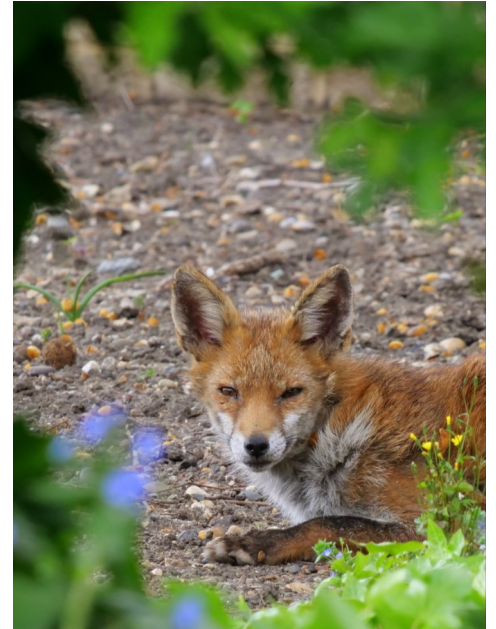
## This week's topic is **River Features**

At Creekside Discovery Centre this week...

One animal that we are very lucky to see around Deptford is the Red Fox. This photo was taken this week at St Paul's Deptford, just up the road from the Discovery Centre.

Red Foxes are enjoying the empty and peaceful streets in London at the moment and soon there will be more of them roaming around — Red Fox cubs first emerge from their dens in late April! Over the next few weeks, during your daily exercise or from your window, look out for the cubs noisily running around playing, especially at dawn and dusk. The adults make frequent trips throughout the night to find food for the cubs.

All living things have a scientific name or a binomial name. The Red Fox is also called *Vulpes vulpes*, which means fox fox in Latin.



### River features bingo

Watch this video about the journey of Britain's longest river, the River Severn. As you watch, listen out for these river keywords. When you hear one tick it off. When you have ticked off all of the keywords call out... Bingo!

Click on the picture to start the video.



source	rain	wide
estuary	meander	flowing
mud	river	mouth
floods	stream	fast

## Name that feature

Match the river feature with the letter on the diagram

1. meander

2. mouth

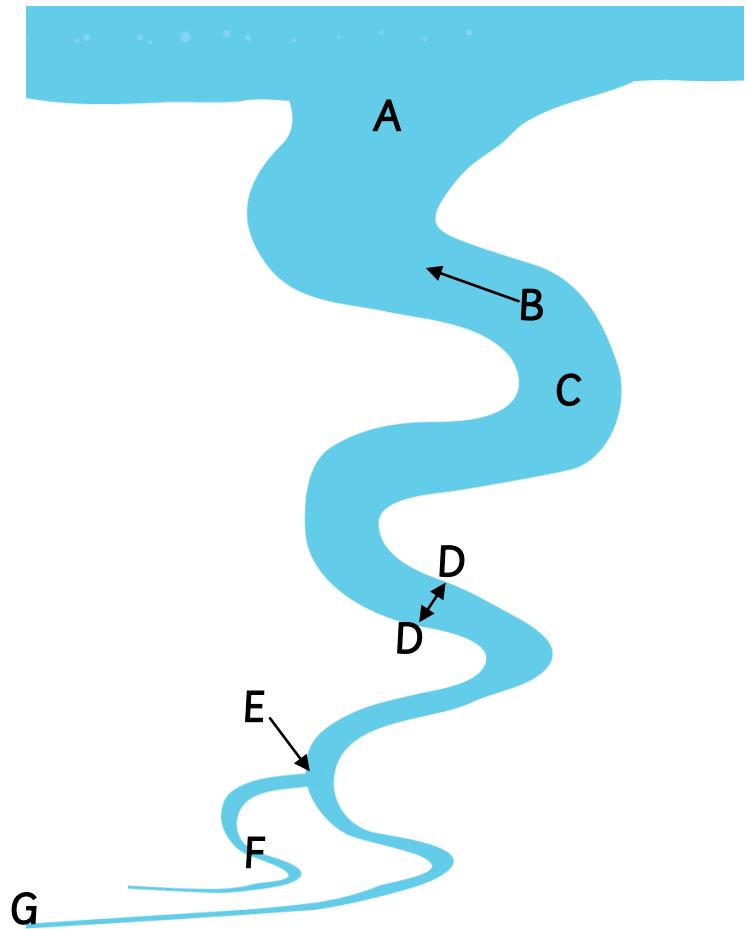
3. tributary

4. source

5. confluence

6. flow

7. banks



To find out more about rivers and check if you got the answers correct [click here](#)

## Word cloud

Using all of the keywords that you know about rivers create your own word cloud...

[Click here to make a word cloud](#)



## The big question



Use all of your knowledge about rivers to answer this big question:

**What is a river?**

Share your work with us on

Email: [education@creeksidecentre.org.uk](mailto:education@creeksidecentre.org.uk)

Twitter: [@Creekside\\_Trust](https://twitter.com/Creekside_Trust)

Facebook: [@CreeksideDiscoveryCentre](https://www.facebook.com/CreeksideDiscoveryCentre)

Instagram: [creekside\\_discovery\\_centre](https://www.instagram.com/creekside_discovery_centre)

YouTube: [Creekside Discovery Centre](https://www.youtube.com/CreeksideDiscoveryCentre)

## Creative Creek


This is Deptford Creek, it flows on the border between Deptford and Greenwich in south east London.


Deptford Creek is the tidal part of the River Ravensbourne. The River Ravensbourne shares many of the same features as other rivers.




Close your eyes and imagine you are there...



What can you see? 

 What can you hear?

What can you smell? 

What emotions might you feel?



Write a poem describing what it's like in Deptford Creek. It can be any type of poem. Try to include:

- exciting adjectives
- imagery
- similes
- onomatopoeia
- metaphors
- rhythm
- alliteration
- personification

If a poem is too tricky have a go at writing some exciting adjectives to describe what you can see in the picture and have a go at putting some of your adjectives into a sentence.

To find out more about poetry and writing poems [click here](#)

