

This week's topic is **What can you see in Deptford Creek?**

At Creekside Discovery Centre this week ...

Spring is all around us and many Creekside animals are nesting and preparing to lay their eggs. On our daily exercise we spotted some Egyptian geese nesting under Ha'penny Hatch bridge.

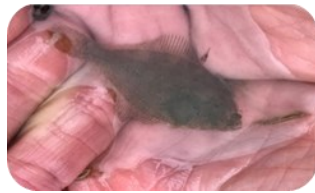
As we move from winter to spring wildlife and plants in the Creek start to change. Crabs come out from the mudbanks, eels reach the Creek from the Sargasso Sea and fish start to spawn.

A new species of plant was found on-site and at Sue Godfrey Nature Park it was the Grape Hyacinth.

Did you know that throughout the year around 200 wildflowers grow in the Creek?

Creekside's Crafty competition!

Enter for a chance to win 2 free tickets to a family activity



Creekside animals:

Can you name these Creek animals? Match the picture to the correct name.



a. Flounder

b. Mute Swan

c. Freshwater Hoglouse

d. Freshwater Shrimp

e. Mallard

f. European Eel

g. Estuarine Prawn

h. Chinese Mitten Crab

Create a Creekside Diorama

(A diorama is a 3-D model)

You will need:

- A shoebox or any cardboard box.
- Glue
- Scissors
- Paint and or colour pens/pencils
- Coloured paper/card or tissue paper
- Any natural items you might find in your garden or on your daily exercise

Things to think about:

- What colour is the water in Deptford Creek?
- What animals live in and around the Creek?

Have a look at the photos on this page to give you some ideas!

Share your diorama with us and the winner will receive 2 free tickets to a family activity.



How to enter:

Send us a picture of your Deptford Creek diorama by email, Facebook, Twitter, Instagram (all details on page 3) by Wednesday 06/05/2020. The winner will be contacted after this date and sent their prize by email. Good luck and enjoy the creative crafting.

Creekside creature riddles



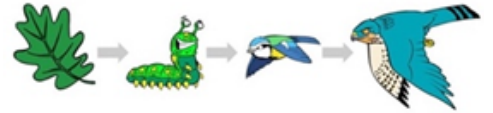
Have a go at writing some riddles about any creatures that live in and around the Creek. Share them with your family and see if they can guess what the animal is or tweet them to us and we'll try and guess!



I am small and sharp.
I shed my shell when I
grow too big. What
am I?



Food chains



Food chains show how plants and animals get their food.

All living things get their energy from the food they eat and they need energy in order to live. Food chains start with plant-life and end with animal-life. A simple food chain could start with grass, which is eaten by rabbits.

Create some food chains for animals you would find living in and around Deptford Creek.

There are lots of online food chain games you can play to practise your food chain knowledge.

These are some that we think are particularly good.

Food chain game 1: [Click here](#)

Food chain game 2: [Click here](#)

Answers

Creekside animals: 1h, 2f, 3d, 4b, 5c, 6a, 7e, 8g

Creekside creature riddles: Crab

Share your work with us on

Email: education@creeksidecentre.org.uk

Twitter: [@Creekside_Trust](https://twitter.com/Creekside_Trust)

Facebook: [@CreeksideDiscoveryCentre](https://www.facebook.com/CreeksideDiscoveryCentre)

Instagram: [creekside_discovery_centre](https://www.instagram.com/creekside_discovery_centre)

YouTube: [Creekside Discovery Centre](https://www.youtube.com/CreeksideDiscoveryCentre)